

mesh vintage profiles

2002

As it transpired, the 2002 vintage could not have been a better year to start the mesh project. It was a textbook vintage for Riesling in the Eden Valley. Naturally low crops were set in late spring and the weather remained mild and dry over the long, even ripening period. In fact, we had the lowest January temperatures on record! The result was very healthy vines that produced grapes with high natural acid, concentrated flavour and excellent quality.

2003

Following the gorgeous 2002 Eden Valley Riesling Vintage, the 2003 had a lot to live up to, and it did. Another dry winter led to vines setting conservative crops and a dry and warm January forecast an early vintage. However February brought some long looked for rain, and the following cool dry weather was perfect for the ripening of flavours and sugars in the grapes. The final result is that 2003 will be remembered as one of the great white vintages in Eden Valley.

2004

After good rains in spring, summer in the Eden Valley was dry but with an unexpectedly cool January, which was perfect for the vines to ripen and maintain good canopies. February brought more normal summer conditions with both a heat spike and plenty of warmth that initiated the flavour ripening phase in Eden Valley grapes. Late February, March and April were dry and balmy with cool nights and warm days.

2005

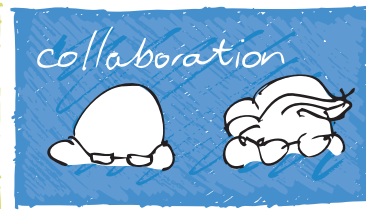
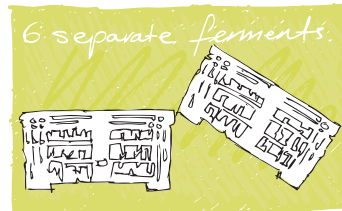
Good rains for the beginning of the 04/05 growing season augured well for vintage. By mid January the skies had cleared and no subsequent rain, combined with balmy temperatures for the remainder of the season, meant that flavours ripened over an even and long period. The result is a wine with excellent intensity of flavour and structure.

2006

It would have been hard to have planned a more perfect Eden Valley vintage. After a lovely wet spring and early summer the vines were healthy and strong and set good conservative crops. The lack of any heat spikes in February, combined with cool nights meant that the vines, under no stress, accumulated sugars quickly while retaining natural acid. The result was a quick, clean and early vintage and gorgeous Riesling.

2007

Vintage 2007 followed an extremely dry growing-season. The nation wide drought presented a number of viticultural challenges, notably numerous cold-weather events during winter and spring causing low crops to be set. Natural rainfall in the Eden Valley during the growing season was less than 40% of average and this, combined with slightly higher than average temperatures caused the grapes to ripen nearly a month earlier than normal. Despite these trials, the quality of the fruit was excellent.



mesh vintage profiles

2008

Although the 2008 vintage was a vintage of extremes, Eden Valley Riesling fared amazingly well. The drought meant no summer rain – but winter rains had filled the soils and the vines were in good health. The vintage was very early, so the fruit was picked before the effects of the late March heatwave were seen. The result is another great Riesling wine with a strong citrus flavour and tight mineral profile, typical of the region and of the mesh style.

2009

After a dry 2008 winter and spring, the vines got off to a good growing start and set well balanced crops. The heat wave in January, while not ideal was pre-veraison and caused few problems. The weather after this, in February, March and into April was cool with particularly cool nights - absolutely perfect for slow ripening, accumulation of flavours and retention of natural acid.

2010

The 2010 vintage growing season began with a cool, wet September and October that meant that the Riesling vines grew slowly. However, beautiful weather through November and December resulted in strong vines that flowered without impediment. An even summer followed with cool nights and no heat spikes - perfect for the ripening of flavours in the berries.

2011

The 2011 vintage will long be remembered for its cool temperatures throughout the ripening and growing months. This has resulted in the white wines from the Eden Valley being delicate and flavourful with generous and balanced natural acidity. Riesling loved the season and the resulting wines are classic examples.

2012

The 2011 Eden Valley winter was warmer than usual with the mean minimum temperature being several degrees higher than average and the rainfall was consistently lower. These mild conditions allowed an even bud burst with good shoot growth in spring followed by a good cropping level at fruit set. Mild summer conditions and cool nights helped develop great flavours and sugar to acid balance. Slightly higher than average rainfall from November through to harvest in March aided flavour development and balance. A great Eden Valley Riesling vintage.

2013

After a drier than average winter, budburst began in the Eden Valley in the middle of September. Post veraison growing season conditions were for the most part dry and warm, with rainfall over the growing season well below average. While summer temperatures were slightly above average there were few extremes and this, combined with lower than average crops and the absence of any rain lead to a smooth, even and uninterrupted vintage where the Riesling grapes retained both natural acidity and great flavours.